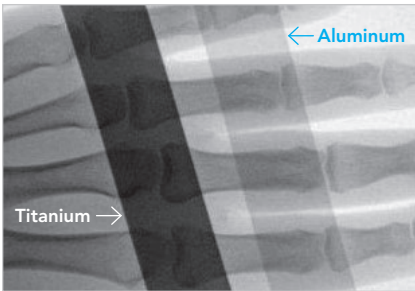


Thompson Retractor

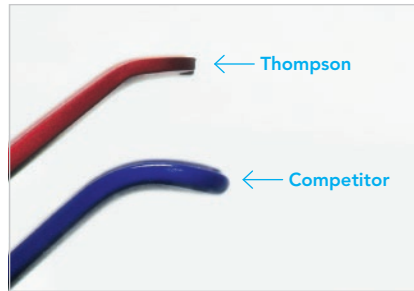
NEW Color-Coded Cervical Blades

Thompson Surgical now offers our S-Lock® and Interchangeable cervical spine blades in anodized aluminum, allowing for easier blade selection with color-coded anodizing.



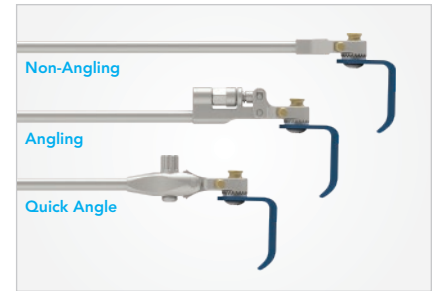
Superior Radiolucency

Anodized aluminum is more radiolucent than titanium.



Thinner Distal End

Distal end is tapered to be thinner than the competition.



Backwards-Compatible

New anodized aluminum cervical blades may be used with your existing S-Lock® or Interchangeable handles.



Concave Lateral

30mm - 120mm lengths
5mm increments



Concave Longitudinal

30mm - 110mm lengths
10mm increments



Concave Micro

30mm - 80mm lengths
5mm increments



Concave Tapered

30mm - 80mm lengths
5mm increments



Odontoid

20mm x 90mm



Midline

70mm x 83mm
Left and Right blades